

Setting up GUI in your PC/ Laptop

Hi

Pls Download the gui from the link send to u (if u already have kindly ignore this step)

Extract SAPGUI_7.4.zip to a folder

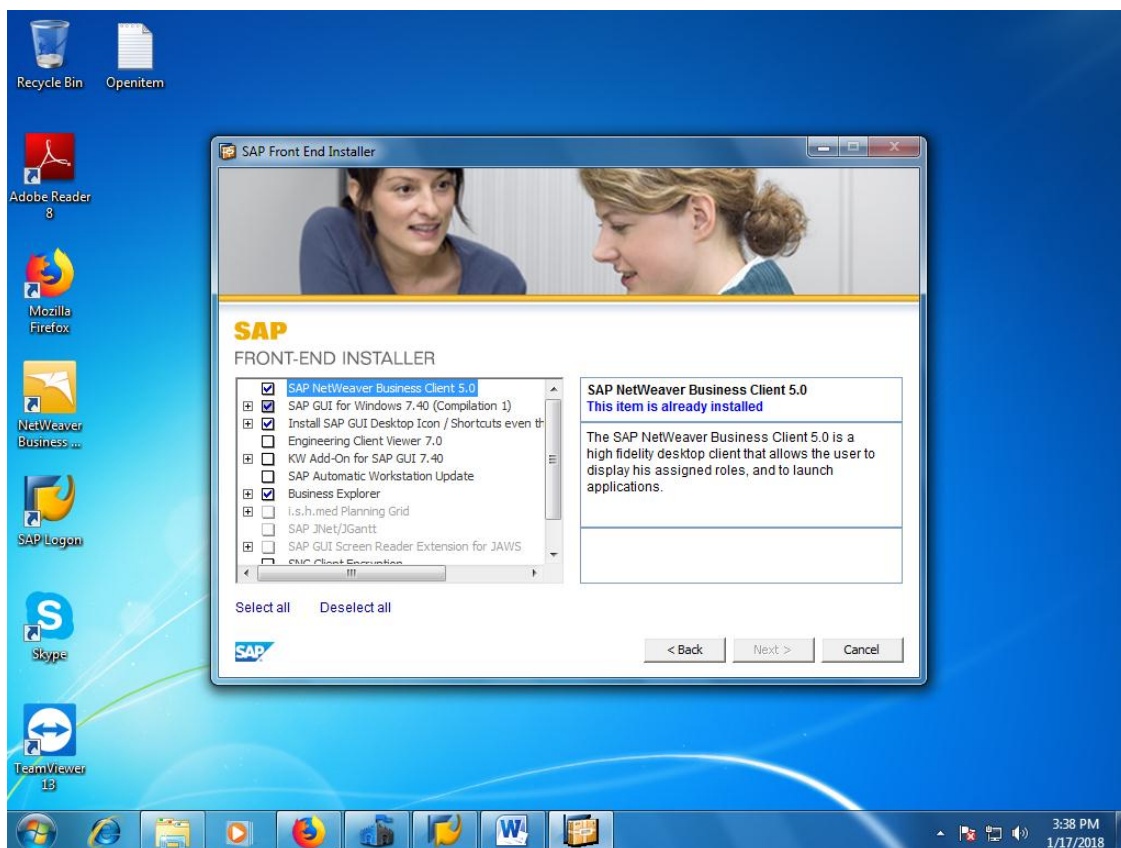
Open **setupall.exe** in the following path

E:\SAPGUI_7.4\BD_NW_7.0_Presentation_7.40_Comp_1_PRES1\GUI\WINDOWS\WIN32

(Where E: is your destination drive where u have downloaded and extracted)

Click on Next to begin the installation

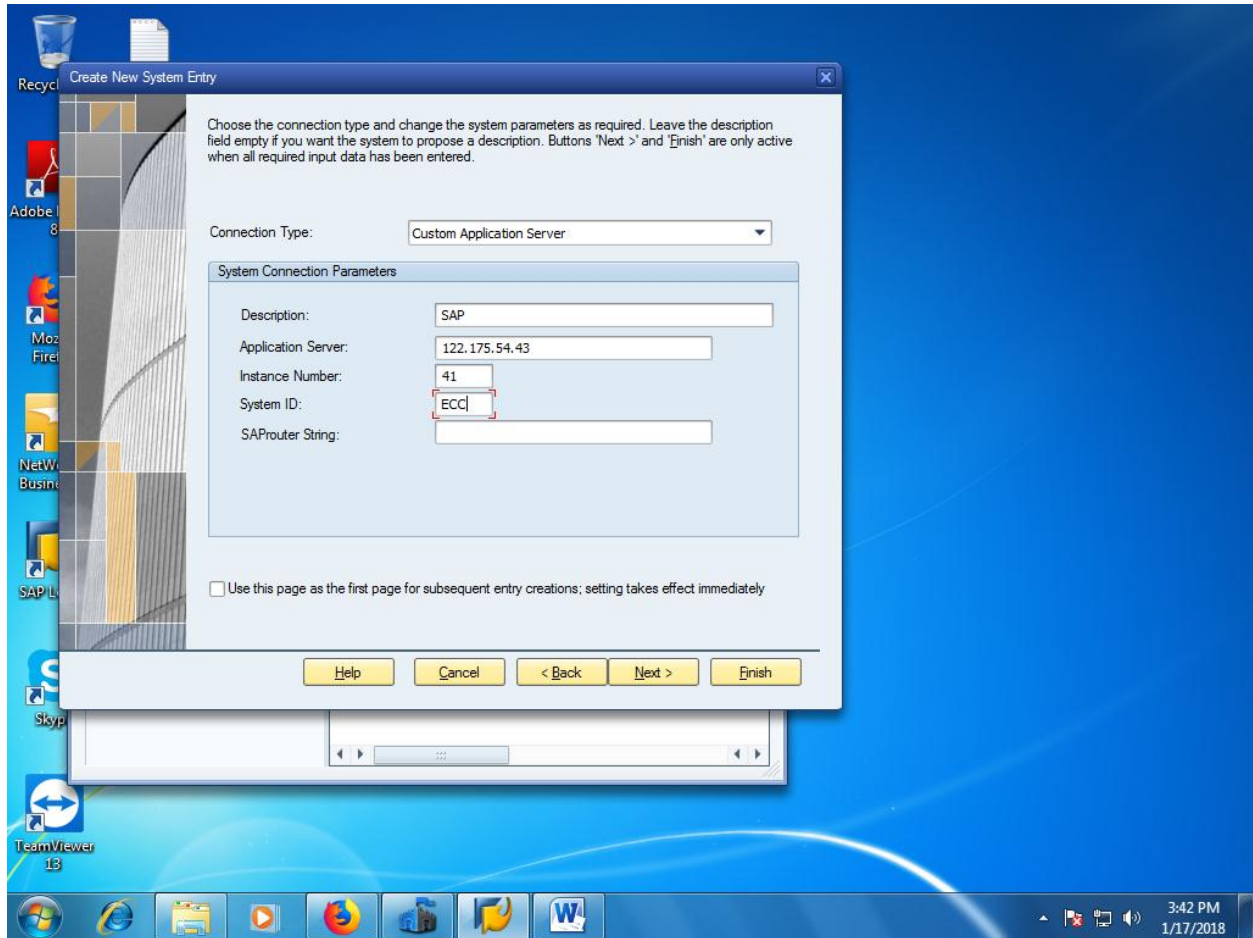
And select following objects given below from the list



Now click on finish to exit the installation.

Open SAP LOGON PAD on the desktop and click on new (a white page icon) on the window

Now add following details



Now click on finish to start your practice

Double click on sap on SAP LOGON PAD and provide your personal USERNAME & PASSWORD

Enjoy accessing SAP .

Thanks.